

Royal Heritage

by Relyon®

Royal Heritage

by Relyon®

Contents


Introduction	2-3
Master bed maker since 1858	4-5
About Relyon	6
Retailers and guarantee	7
Buying advice	8-9
Handmade just for you	10
Outstanding craftsmanship	11-13
The finest of natural fillings	14-15
Bed Collection	16-39
Montacute	16-19
Cranleigh	20-23
Rosemount	24-27
Hampton	28-31
Clarence	32-35
Beaulieu	36-39
Divan Collection	40-47
Divan craftsmanship	42-43
Divan options	44-45
Drawer options	46-47
Headboard Collection	48-51
Fabric Collection	52-53
Summary specification tables	54-55

The best beds in the world

The Royal Heritage is a collection of six handmade models which apply Relyon's expertise in blending the very best in high quality natural fillings with traditional, time-honoured skills to create the most luxurious hand-crafted beds.

Royal Heritage

Redefining comfort
and luxury for a new era



A better way of life as of now...

Sleep is essential for your health and quality of life. Purchasing the best bed is a great investment, especially when you think of the number of hours, days, weeks, years you will spend in it. On average you will spend a third of your life in bed. Sleep is restorative, so it has great impact on your physical and emotional health. At Relyon we focus on what you really need and we have put our wealth of expertise into our carefully developed Royal Heritage Collection to ensure you can have the most peaceful sleep. You deserve a great night's sleep to ensure you feel refreshed, re-energised and alert to enjoy your day and your life ahead.

Master bed maker since 1858

Natural fillings are the key ingredient in making the most sumptuous mattress. At Relyon we really know and understand natural fibres as we began life in 1858 as a wool merchant in the Somerset town of Wellington.

Originally named by the founding Price family as Price Brothers and Co., the business evolved rapidly into manufacturing beds, and then in 1935 the name was changed to Relyon as the goal was to design beds that you could truly “rely on” for a good night’s sleep.

Our philosophy is still the same today: your comfort is our paramount priority.

Relyon is one of the oldest bed manufacturers with vast experience of how to make the highest quality pocket-sprung hand-crafted beds. All of Relyon’s mattresses are handmade using time-honoured skills that have been passed on and improved upon generation after generation. Relyon’s craftsmen train for many years in order to perfect their skills in producing the best beds in the world.





Over the last 154 years Relyon has gone from strength to strength. The heart of the business and the manufacturing headquarters remain in Wellington, Somerset, with a workforce of over 400 employees. Today Relyon is a brand name synonymous with the very highest standards of product design and manufacturing quality and is now recognised as one of the leading UK bed manufacturers.



Every Relyon mattress is hand-crafted using traditional, time-honoured skills which machines can not replicate.

Relyon makes the best because you deserve the best.

Award winners...

Relyon's superior product quality has been recognised with a number of awards. In 1994 Relyon was the first bed manufacturer to be awarded with The Worshipful Company of Furniture Makers' highly prestigious Manufacturing Guild Mark. Relyon remains only one of five major bed manufacturers to have achieved Guild Mark status.

Relyon are NBF Approved Members which means you can buy Relyon product in confidence, safe in the knowledge that what you buy is safe, clean and honest. To achieve NBF Approved Member status Relyon are independently audited against the NBF's strict Code of Practice criterias which cover three areas: flammability, health and hygiene, and trade descriptions.



**Manufacturing
Guild Mark**

Awarded by The Worshipful Company of Furniture Makers
of the City of London www.furnituremakers.org.uk



With all to offer...

Relyon has its own spring manufacturing company on site, as well as its own wood mill. In addition to these Relyon is one amongst a few bed manufacturers to have its own in-house laboratory, which systematically tests all raw materials to ensure that these are in accordance with product specifications and achieve European legalisation standards. Quality is important throughout the organisation, and Relyon is committed to the principles of ISO9001.

As an environmentally aware and progressive business, Relyon are proud to be full members of the Furniture Industry Sustainability Programme (FISP) and fully support its goals and aims.

Crafting with care...

Relyon has a record of meeting environmental standards, and we aim to maintain this reputation by continuing to invest in systems, practices and facilities to elevate standards in line with society's environmental expectations.

Relyon's environmental responsibilities are at the heart of our business and every effort been made to ensure that our manufacturing facilities, products and packaging are as environmentally friendly as possible and comply with all municipal, regional and national requirements. Relyon minimise the impact of their products on the environment by:

- Sourcing wood from FSC or PEFC certified sources
- Recycling our waste where ever possible
- Keeping packaging to minimum, and using responsibly sourced or recycled packaging
- Monitoring and targeting of energy and water consumption
- Ensuring all our purchased energy is 100% green energy
- Continual investment in systems, practices, people and facilities to continually reduce our impact on our environment

Relyon's FISP certification demonstrates our commitment to maintaining sustainable excellence.



Exclusive retailers

The Royal Heritage is Relyon's premium range of mattresses and custom-made divans. The best way to appreciate these beds is to experience them for yourself. Please visit our website for your nearest Royal Heritage Collection exclusive stockist.

Try in store today

Try our new mattresses in store, where our friendly bed experts are on hand if you need further help to find the mattress that suits you.

5 year guarantee

All mattresses and divans are handmade and built to customers' orders, and we are proud to guarantee them for a full five years from date of purchase.



Time for a new bed? Choosing the perfect mattress support...

The National Bed Federation recommends that a bed is changed every seven years. People often keep them well beyond this and then have to replace them for all the wrong reasons: back pain, worn cover, tired fillings, exposed springs and lack of support.

By consulting a bed expert in store you will receive the help and information about each bed that you need in order to find the mattress that suits you.

Take your time to choose...

Before you decide on a specific model it is important to try out a few, as each mattress within the Royal Heritage Collection has a different feel due to the varying spring counts, fillings and divan bases. Your mattress should give your entire body support and keep your spine as straight as possible. When choosing, everyone will have a different opinion of what is right for them; to help finalise that choice it is important to follow the simple rules below:

- Allow yourself plenty of time when testing out the mattresses
- Remove all outerwear and lie in your normal sleeping position as you would at home for at least five minutes
- If you share a bed it is very important you both try it and that you choose a mattress that is supportive and comfortable for both of you. What feels comfortable for one person is not necessarily comfortable for another person
- You need to make sure you have enough room to stretch out and freely turn over; size does matter, so always try to purchase the biggest bed that will fit in your room

Purchasing the best bed possible is a great investment for your health and quality of life. A better night's sleep makes for a better day awake.

Too Soft

You will find it hard to slide your hand between the mattress and the small of your back.



Correct Support

The mattress conforms to your body contours whilst the spine remains straight. Your hand will slip snugly between the mattress and the small of your back.



Too Firm

Your hand will have lots of space between the mattress and the small of your back.





Made in the United Kingdom

Handmade by Somerset Craftsmen since 1858

Handmade just for you

With a variety of six mattresses, four divan bases and six headboard designs in a choice of twenty four upholstery fabrics, the Royal Heritage Collection are all handmade to order only, so that you can have the bespoke bed that suits you perfectly in both style and comfort.

Outstanding craftsmanship

The Royal Heritage Collection is an outstanding selection of handmade beds, combining the traditional skills of our master craftsmen with the world's finest bed upholstery fillings to meet the highest quality standards.



Hand-teasing



Upholstery needle and thread



Pocket calico springs



Handle and vents

A carefully decided blend of natural fillings is weighed and layered to create every Royal Heritage mattress. Some natural hairs are hand-teased to ensure that the most even and sumptuous layering of mattress upholstery is achieved. All the Royal Heritage mattresses are covered in the finest Belgium damask tick which is intrinsically soft and breathable. The Relyon logo is woven into the fabric to say that each Royal Heritage mattress has been handmade by the makers of the best beds in the world.

Natural fibre fillings and precisely placed vents help to release moisture and increase freshness, and this will help to maintain a consistent sleeping temperature. Hand-tufting is a traditional skill which ensures that all loose fillings are secured to provide the perfect finish to your mattress. With over 150 years' experience Relyon understands the different attributes of the springs, fillings and fabrics used in order to create supremely comfortable and supportive beds for a truly beautiful night's sleep.

A man in a light blue button-down shirt is shown from the waist up, leaning over a large mattress. He is focused on the pocketed springs, with his hands resting on the surface. The background is a wall of similar pocketed springs, creating a textured, honeycomb pattern. The lighting is warm and directional, highlighting the man's face and the texture of the springs.

The secret is in the support...

Ensuring quality. Relyon doesn't buy springs, we make our own.

Relyon has its own spring manufacturing company on site, ensuring the finest grade of steel is used to produce the thousands of pocketed springs that are the secret to giving you the support you need from a mattress whilst sleeping.

The secret is in the springs.

Individual pocketed springs, hand-nested and hand-centred for the ultimate support.

Individual steel springs are sewn into hard-wearing calico fabric pockets. The pocketed springs are hand-nested in a honeycomb pattern to produce a unit for the centre of the mattress. Linen cord is threaded through the springs to tie the springs and secure the nesting.

The major benefit of pocketed springs is that each spring moves independently from the others to support different body weights and shapes and subsequently pocket sprung mattresses therefore have no roll together. Higher spring counts offer more supportive comfort.

In the Royal Heritage mattresses with a double layer of pocket springs, the upper springs shape to the body contours while the lower layer absorbs changes in weight distribution for the ultimate in comfort and support.

Relyon's skilled craftsmen use upholstery needles to hand side stitch the Royal Heritage mattresses with as many as five rows of stitching. This is a lengthy process that has taken our experienced craftsmen years to master. It provides support to the mattress walls, extending the sleeping area to the edge of the mattress.



It takes up to half a day to hand side stitch the borders on a top Royal Heritage mattress.



Only the finest
of natural fillings
are used...



Anti-allergenic layer

All Royal Heritage mattresses have a layer of anti-allergenic fibre underneath the mattress fabric cover. This layer is sterilised and dust free, therefore ideal for allergy sufferers.



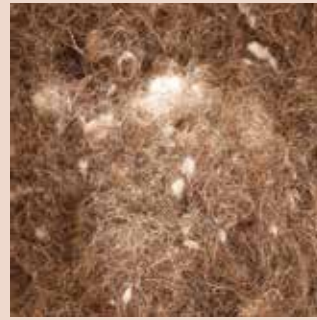
Cambric

A tight weave fabric that helps prevent unwanted penetration of hair and fibres.



Camel hair

Camel hair has thermostatic properties, guaranteeing coolness in the summer and warmth in the winter. Camel hair is also extremely soft.



Cashmere and silk

Cashmere hair and the finest silk fibres are blended into a durable insulation layer. This layer also provides a supportive feel.



Hand-teased cashmere

Cashmere is the wool of the Kashmir goat. It has excellent insulating properties and is used to help regulate a comfortable sleeping environment.



Hand-teased horse hair

Horse hair is flexible and provides natural bounce as it is the strongest, longest and most resilient fibre of bed upholstery fibres. Horse hair has fantastic ventilating properties. The hollow fibre transports humidity away from the body and helps regulate temperature.



Lambswool layer

Lambswool is blended into a blanket-like layer and used as a soft and insulating upholstery layer for added comfort.



Hand-teased lambswool

Lambswool is a natural insulator providing coolness in the summer and warmth in the winter. Offering superb comfort, it also has hydroscopic properties encouraging the evaporation of body moisture.



Hand-teased merino wool

One of the softest and most sumptuous wools, it is also used for its excellent hydroscopic properties that allow body moisture to evaporate.



Hand-teased mohair

This luxury fibre from Angora goats provides durability, insulation and softness.



Cotton blend

A combination of cotton and luxurious soft white fibre is formed into a deep layer for guaranteed quality and softness.



Rebound cotton layer

This cotton layer is designed with responsive rebound properties that complement the calico cotton spring units to help provide the most comfortable feel.



Montacute

Relyon is proud to present our range-topping pocket-sprung mattress in the Montacute. Made from the best bed upholstery materials in the world and crafted within the finest of bed making traditions, the Montacute is quintessentially Relyon. This mattress wraps the sensuality of a perfect blend of natural fillings around a triple layer of over 5,500 pocketed springs in a super king size mattress. The Montacute is an opulent mattress upholstered with generous quantities of camel hair, lambswool, merino wool, cashmere and horse hair, and is finished with five rows of hand side stitching for edge to edge support. Sleep is essential for your physical and emotional health, and so you need a good night's sleep to ensure that you feel refreshed, re-energised and alert for the new day. The Montacute provides you with unsurpassed levels of comfort and support, therefore granting you a much better quality of life.



Montacute

Relyon recommends pairing the Montacute mattress with a hand-side-stitched pocketed divan.



Mattress | 21 comfort layers

Mattress springs

- 4750* hand-nested and hand-centre-tied calico pocketed springs arranged in three layers

*in king size (150 x 200cm) mattress

Upholstery fillings

- Anti-allergenic layer 140g
- Camel hair pad 200g
- Lambswool layer 300g
- Hand-teased lambswool 28g
- Hand-teased merino wool 28g
- Hand-teased cashmere 28g
- Hand-teased mohair 28g
- Cambric layer
- Hand-teased horse hair 28g
- Rebound cotton layer 1000g

As this is a turnable mattress the fillings are repeated on the other side of the spring unit.

Key features

- 5 rows of hand side stitching
- Traditionally hand tufted with woollen tufts
- 8 handles and 16 silver vents
- Turnable mattress
- 2 tensions available: medium or medium firm

Hand-side-stitched pocketed divan

Key features

- 1100* hand-nested pocketed springs
*in king size (150 x 200cm) divan
- 6" timber frame with rigid sides and all joints glued and screwed
- The pocketed springs are overlaid with a fibre layer for protection
- Individual heavy duty open coil springs attached to the divan frame and webbed by hand
- Traditionally hand tufted with woollen tufts
- 2 rows of hand side stitching
- Large shepherd castors for ease of moving and to support the weight of both the mattress and divan
- Upholstered with your choice of Royal Heritage fabric
- Tailored finish with skirted sides

Mattress border height, 34.5cm*

*includes 4cm maximum tolerance for loft of fillings on this turnable mattress.

		Spring count	Weight based on a medium tension mattress. Rounded to the next greater whole kg.
Single	90 x 190cm	2706	59kg
Double	135 x 190cm	4182	89kg
King	150 x 200cm	4773	104kg
Super King	180 x 200cm	5547	124kg
Zip and Link	2 x (75 x 190cm)	4674	98kg
Zip and Link	2 x (90 x 190cm)	5412	118kg
Zip and Link	2 x (75 x 200cm)	4902	106kg
Zip and Link	2 x (90 x 200cm)	5676	126kg

Complete your set

1) Choose your headboard



Please see page 50 for all the headboard designs available.

2) Choose your mattress tension



3) Choose your divan



4) Choose your fabric

24 contemporary and traditional designed fabrics to choose from, you are guaranteed to find a fabric that personalises your bedroom.

Please see pages 52-53 for all the fabric options available.

Hand-side-stitched pocketed divan height 37.5cm

		Spring count	Weight rounded to the next greater whole kg
Single	90 x 190cm	619	47kg
Double	2 x (68 x 190cm)	1024	70kg
King	2 x (75 x 200cm)	1116	81kg
Super King	2 x (90 x 200cm)	1314	98kg

Other divan options:

hand-lashed, pocketed or sprung edge divans are available.

Please see pages 44-45 for the full details on the divans available.



In the bedroom shown:
a 180 x 200cm Montacute mattress on a
hand-side-stitched pocketed divan.
The divan and extra wide statement height
Noble headboard are in Royal 3534



Cranleigh

The Cranleigh captures the essence of Relyon's philosophy to create the best beds in the world. Producing quality is as natural to Relyon as the materials used. In a super king size mattress a carefully designed blend of luxurious natural fibres is laid over more than 3,500 supportive hand-nested and centre-tied calico pocketed springs. Soft natural fibres like lambswool, merino wool and mohair are combined with the durability and loft of cashmere, and further enhanced by the intrinsic spring of horse hair. Relyon's master craftsmen dedicate a great deal of time and skill to create a Cranleigh mattress. In order to enhance the fibres' inherent attributes over three hours are spent meticulously hand teasing and layering the wealth of natural fillings. The result is a truly elegant mattress which will lead you into a blissful deep sleep every night for years to come.



Cranleigh

Relyon recommends pairing the Cranleigh mattress with a hand-side-stitched pocketed divan.



Mattress | 18 comfort layers

Mattress springs

- 3000* hand-nested and hand-centre-tied calico pocketed springs arranged in two layers

*in king size (150 x 200cm) mattress

Upholstery fillings

- | | |
|---------------------------|-------|
| • Anti-allergenic layer | 140g |
| • Lambswool layer | 300g |
| • Hand-teased lambswool | 85g |
| • Hand-teased merino wool | 28g |
| • Hand-teased cashmere | 28g |
| • Hand-teased mohair | 28g |
| • Cambric layer | |
| • Hand-teased horse hair | 28g |
| • Rebound cotton layer | 1000g |

As this is a turnable mattress the fillings are repeated on the other side of the spring unit.

Key features

- 5 rows of hand side stitching
- Traditionally hand tufted with woollen tufts
- 8 handles and 16 silver vents
- Turnable mattress
- 2 tensions available: medium or medium firm

Hand-side-stitched pocketed divan

Key features

- 1100* hand-nested pocketed springs
- *in king size (150 x 200cm) divan
- 6" timber frame with rigid sides and all joints glued and screwed
 - The pocketed springs are overlaid with a fibre layer for protection
 - Individual heavy duty open coil springs attached to the divan frame and webbed by hand
 - Traditionally hand tufted with woollen tufts
 - 2 rows of hand side stitching
 - Large shepherd castors for ease of moving and to support the weight of both the mattress and divan
 - Upholstered with your choice of Royal Heritage fabric
 - Tailored finish with skirted sides

Mattress border height, 33cm*

*includes 4cm maximum tolerance for loft of fillings on this turnable mattress.

		Spring count	Weight <small>based on a medium tension mattress. Rounded to the next greater whole kg.</small>
Single	90 x 190cm	1716	47kg
Double	135 x 190cm	2652	70kg
King	150 x 200cm	3034	81kg
Super King	180 x 200cm	3526	98kg
Zip and Link	2 x (75 x 190cm)	2964	77kg
Zip and Link	2 x (90 x 190cm)	3432	93kg
Zip and Link	2 x (75 x 200cm)	3116	83kg
Zip and Link	2 x (90 x 200cm)	3608	100kg

Complete your set

1) Choose your headboard



Please see page 50 for all the headboard designs available.

2) Choose your mattress tension



3) Choose your divan



4) Choose your fabric

24 contemporary and traditional designed fabrics to choose from, you are guaranteed to find a fabric that personalises your bedroom.

Please see pages 52-53 for all the fabric options available.

Hand-side-stitched pocketed divan height 37.5cm

		Spring count	Weight <small>rounded to the next greater whole kg</small>
Single	90 x 190cm	619	47kg
Double	2 x (68 x 190cm)	1024	70kg
King	2 x (75 x 200cm)	1116	81kg
Super King	2 x (90 x 200cm)	1314	98kg

Other divan options:

hand-lashed, pocketed or sprung edge divans are available. Please see pages 44-45 for the full details on the divans available.



In the bedroom shown:
a 180 x 200cm Cranleigh mattress on
a hand-side-stitched pocketed divan.
The divan and extra wide statement
height Consort headboard are in
Smoulder 3625



Rosemount

The very moment you lay on a Rosemount mattress with its superior level of comfort and support you know you have found the mattress that makes choosing a bed easy. One of the best investments you can make in your life is to purchase the best bed possible. Research has found that within a regular sleep routine, a good night's sleep can help you live longer, boost your memory and reduce stress. The Rosemount uses an abundance of meticulously hand-teased mohair, hand-teased horse hair, cotton blend, lambswool, cashmere and silk layers with a double layer of hand-nested and centre-tied calico pocketed springs to create one of the finest mattresses available. This mattress is topped with an anti-allergenic layer and the highest quality Belgian damask ticking and is finished with four rows of hand side stitching for edge to edge support.



Rosemount

Relyon recommends pairing the Rosemount mattress with a hand-lashed divan.



Mattress | 16 comfort layers

Mattress springs

- 2400* hand-nested and hand-centre-tied calico pocketed springs arranged in two layers

*in king size (150 x 200cm) mattress

Upholstery fillings

- Anti-allergenic layer 150g
- Cotton blend 1000g
- Lambswool layer 300g
- Hand-teased mohair 28g
- Cambric layer
- Hand-teased horse hair 28g
- Cashmere and silk pad 900g
- Rebound cotton layer 1000g

As this is a turnable mattress the fillings are repeated on the other side of the spring unit.

Key features

- 4 rows of hand side stitching
- Traditionally hand tufted with woollen tufts
- 8 handles and 16 silver vents
- Turnable mattress
- 3 tensions available: soft, medium, firm

Hand-lashed divan

Key features

- Individual heavy duty open coil springs are hand-tied to the divan frame with waxed linen cord
- 6" timber frame with rigid sides and all joints glued and screwed
- Large shepherd castors for ease of movement and to support the weight of both the mattress and divan
- Upholstered with your choice of Royal Heritage fabric
- Tailored finish with skirted sides

Mattress border height, 33cm*

*includes 4cm maximum tolerance for loft of fillings on this turnable mattress.

		Spring count	Weight based on a medium tension mattress. Rounded to the next greater whole kg.
Single	90 x 190cm	1480	46kg
Double	135 x 190cm	2220	70kg
King	150 x 200cm	2496	81kg
Super King	180 x 200cm	3198	97kg
Zip and Link	2 x (75 x 190cm)	2516	77kg
Zip and Link	2 x (90 x 190cm)	2960	91kg
Zip and Link	2 x (75 x 200cm)	2652	83kg
Zip and Link	2 x (90 x 200cm)	3120	99kg

Hand-lashed divan height 30cm

		Spring count	Weight rounded to the next greater whole kg
Single	90 x 190cm	40	37kg
Double	2 x (68 x 190cm)	64	55kg
King	2 x (75 x 200cm)	64	64kg
Super King	2 x (90 x 200cm)	80	77kg

Other divan options:

hand-side-stitched pocketed, pocketed or sprung edge divans are available.

Please see pages 44-45 for the full details on the divans available.

Complete your set

1) Choose your headboard



Please see page 50 for all the headboard designs available.

2) Choose your mattress tension



3) Choose your divan



4) Choose your fabric

24 contemporary and traditional designed fabrics to choose from, you are guaranteed to find a fabric that personalises your bedroom.

Please see pages 52-53 for all the fabric options available.



In the bedroom shown:
a 150 x 200cm Rosemount mattress
on a hand-lashed divan.
The divan is in Mist Hexagonal 3627.
The extra wide statement height Stately headboard is in
Mist Plain 3629 with a Mist Hexagonal 3627 centre panel



Hampton

The Hampton has a unique balance of natural fillings overlaying a double layer of hand-nested and centred calico pocketed springs. Hand-teased lambswool, mohair and horse hair offer superb levels of comfort. The Hampton mattress has three rows of hand-side-stitched borders to provide comfortable edge support, anti-allergenic layers and the highest quality Belgian damask ticking. This sumptuous and supportive mattress will take your sleeping experience to new levels of serenity.



Hampton

Relyon recommends pairing the Hampton mattress with a pocketed divan.



Mattress | 16 comfort layers

Mattress springs

- 2400* hand-nested and hand-centre-tied calico pocketed springs arranged in two layers

*in king size (150 x 200cm) mattress

Upholstery fillings

- Anti-allergenic layer 140g
- Cotton blend 700g
- Lambswool layer 300g
- Hand-teased lambswool 54g
- Hand-teased mohair 28g
- Cambric layer
- Hand-teased horse hair 28g
- Rebound cotton layer 1000g

As this is a turnable mattress the fillings are repeated on the other side of the spring unit.

Key features

- 3 rows of hand side stitching
- Traditionally hand tufted with woollen tufts
- 8 handles and 16 silver vents
- Turnable mattress
- 3 tensions available: soft, medium or firm

Pocketed divan

Key features

- 1150* hand-nested pocketed springs
- *in king size (150 x 200cm) divan
- Timber frame with solid sides and all joints glued and screwed
 - The pocketed springs are overlaid with a fibre layer for protection
 - Drawer options available
 - All drawers are assembled from solid hardwood components, using dovetail joints for strength and feature smooth operation runners
 - Brushed silver castors
 - Upholstered with your choice of Royal Heritage fabric

Mattress border height, 30cm*

*includes 4cm maximum tolerance for loft of fillings on this turnable mattress.

		Spring count	Weight based on a medium tension mattress. Rounded to the next greater whole kg.
Single	90 x 190cm	1480	44kg
Double	135 x 190cm	2220	66kg
King	150 x 200cm	2496	77kg
Super King	180 x 200cm	3198	93kg
Zip and Link	2 x (75 x 190cm)	2516	74kg
Zip and Link	2 x (90 x 190cm)	2960	88kg
Zip and Link	2 x (75 x 200cm)	2652	79kg
Zip and Link	2 x (90 x 200cm)	3120	95kg

Pocketed divan height 43.5cm

		Spring count	Weight rounded to the next greater whole kg
Single	90 x 190cm	630	37kg
Double	2 x (68 x 190cm)	924	55kg
King size	2 x (75 x 200cm)	1152	65kg
Super King	2 x (90 x 200cm)	1280	78kg

Other divan options:

hand-side-stitched pocketed, hand-lashed or sprung edge divans are available.

Please see pages 44-45 for the full details on the divans available.

Complete your set

1) Choose your headboard



Please see page 50 for all the headboard designs available.

2) Choose your mattress tension



3) Choose your divan



4) Choose your fabric

24 contemporary and traditional designed fabrics to choose from, you are guaranteed to find a fabric that personalises your bedroom.

Please see pages 52-53 for all the fabric options available.



In the bedroom shown:
a 150 x 200cm Hampton mattress on a pocketed divan.
The divan and extra wide statement height Praise
headboard are in Pip 3620



Clarence

A beautiful hand-crafted mattress with a double layer of hand-nested, centre-tied calico pocketed springs combined with only the finest natural soft fibres, finished with three rows of hand side stitching and hand tufted with woollen tufts. The Clarence mattress has a total of twelve upholstery layers, including four lambswool layers, two generously deep layers of hand-teased lambswool and two luxurious layers of hand-teased mohair, all working in harmony to provide a superb level of comfort and support for a peaceful night's sleep.



Clarence

Relyon recommends pairing the Clarence mattress with a pocketed divan.



Mattress | 14 comfort layers

Mattress springs

- 2300* hand-nested and hand-centre-tied calico pocketed springs arranged in two layers

*in king size (150 x 200cm) mattress

Upholstery fillings

- Anti-allergenic layer 140g
- Lambswool layer 300g
- Hand-teased lambswool 141g
- Hand-teased mohair 28g
- Lambswool layer 300g
- Rebound cotton layer 1000g

As this is a turnable mattress the fillings are repeated on the other side of the spring unit.

Key features

- 3 rows of hand side stitching
- Traditionally hand tufted with woollen tufts
- 8 handles and 16 silver vents
- Turnable mattress
- 3 Tensions available: soft, medium or firm

Pocketed divan

Key features

- 1150* hand-nested pocketed springs
- *in king size (150 x 200cm) divan
- Timber frame with solid sides and all joints glued and screwed
 - The pocketed springs are overlaid with a fibre layer for protection
 - Drawer options available
 - All drawers are assembled from solid hardwood components, using dovetail joints for strength, and feature smooth operation runners
 - Brushed silver castors
 - Upholstered with your choice of Royal Heritage fabric

Mattress border height, 30cm*

*includes 4cm maximum tolerance for loft of fillings on this turnable mattress.

		Spring count	Weight based on a medium tension mattress. Rounded to the next greater whole kg.
Single	90 x 190cm	1258	37kg
Double	135 x 190cm	1924	55kg
King	150 x 200cm	2340	65kg
Super King	180 x 200cm	2964	78kg
Zip and Link	2 x (75 x 190cm)	2220	62kg
Zip and Link	2 x (90 x 190cm)	2516	74kg
Zip and Link	2 x (75 x 200cm)	2340	67kg
Zip and Link	2 x (90 x 200cm)	2652	80kg

Pocketed divan height 43.5cm

		Spring count	Weight rounded to the next greater whole kg
Single	90 x 190cm	630	37kg
Double	2 x (68 x 190cm)	924	55kg
King	2 x (75 x 200cm)	1152	65kg
Super King	2 x (90 x 200cm)	1280	78kg

Other divan options:

hand-side-stitched pocketed, hand-lashed or sprung edge divans are available.

Please see pages 44-45 for the full details on the divans available.

Complete your set

1) Choose your headboard



Please see page 50 for all the headboard designs available.

2) Choose your mattress tension



3) Choose your divan



4) Choose your fabric

24 contemporary and traditional designed fabrics to choose from, you are guaranteed to find a fabric that personalises your bedroom.

Please see pages 52-53 for all the fabric options available.



In the bedroom shown:
a 150 x 200cm Clarence mattress on a pocketed divan.
The divan and extra wide statement height
Honour headboard are in Dove 3535



Beaulieu

The Beaulieu is a naturally inspired mattress as lambswool has always been a mattress filling of choice owing to its softness and its ability to keep you cool in the summer and warm in the winter. The Beaulieu is a turnable mattress and boasts a copious amount of hand-teased lambswool between lambswool layers. The support is provided by the layer of hand-nested, centre-tied calico pocketed springs, and the mattress is beautifully finished with three rows of traditional hand side stitching and hand tufted with wool tufts.



Beaulieu

Relyon recommends pairing the Beaulieu mattress with a sprung edge divan.



Mattress | 11 comfort layers

Mattress springs

- 1750* hand-nested and hand-centre-tied calico pocketed springs *in king size (150 x 200cm) mattress

Upholstery fillings

- Anti-allergenic layer 140g
- Lambswool layer 300g
- Hand-teased lambswool 141g
- Lambswool layer 300g
- Rebound cotton layer 1000g

As this is a turnable mattress the fillings are repeated on the other side of the spring unit.

Key features

- 3 rows of hand side stitching
- Traditionally hand tufted with woollen tufts
- 8 handles and 16 silver vents
- Turnable mattress
- 2 tensions available: medium or medium firm

Sprung edge divan

Key features

- Timber frame with solid sides and all joints glued and screwed
- The open coil spring unit coupled with cane edging overlaid with a fibre layer for protection
- Drawer options available
- All drawers are assembled from solid hardwood components, using dovetail joints for strength, and feature smooth operation runners
- Brushed silver castors
- Upholstered with your choice of Royal Heritage fabric

Mattress border height, 26cm*

*includes 4cm maximum tolerance for loft of fillings on this turnable mattress.

		Spring count	Weight <small>based on a medium tension mattress. Rounded to the next greater whole kg.</small>
Single	90 x 190cm	1008	29kg
Double	135 x 190cm	1512	43kg
King	150 x 200cm	1760	50kg
Super King	180 x 200cm	2112	60kg
Zip and Link	2 x (75 x 190cm)	1680	48kg
Zip and Link	2 x (90 x 190cm)	2016	60kg
Zip and Link	2 x (75 x 200cm)	1760	52kg
Zip and Link	2 x (90 x 200cm)	2112	62kg

Sprung edge divan depth, 43.5cm

		Spring count	Weight <small>rounded to the next greater whole kg</small>
Single	90 x 190cm	192	42kg
Double	2 x (68 x 190cm)	288	62kg
King	2 x (75 x 200cm)	350	74kg
Super King	2 x (90 x 200cm)	400	87kg

Other divan options:

hand-lashed, pocketed or sprung edge divans are available. Please see pages 44-45 for the full details on the divans available.

Complete your set

1) Choose your headboard



Please see page 50 for all the headboard designs available.

2) Choose your mattress tension



3) Choose your divan



4) Choose your fabric

24 contemporary and traditional designed fabrics to choose from, you are guaranteed to find a fabric that personalises your bedroom.

Please see pages 52-53 for all the fabric options available.



In the bedroom shown:
a 150 x 200cm Beaulieu mattress on a sprung edge divan.
The divan and extra wide statement height Imperial
headboard are in Clay 3622



Enhance your sleep experience further...

Perfectly match your mattress with a Relyon
custom-made divan base.



The foundations...

We invite you to look at the craftsmanship that goes into creating our luxury divan bases.

Hand lashing

Hand lashing is a unique, time-consuming and age-old technique where every individual heavy-duty open coil springs are hand tied to a flexible cane edging with waxed linen cord to provide outstanding support.



Hand-side-stitched pocketed divans

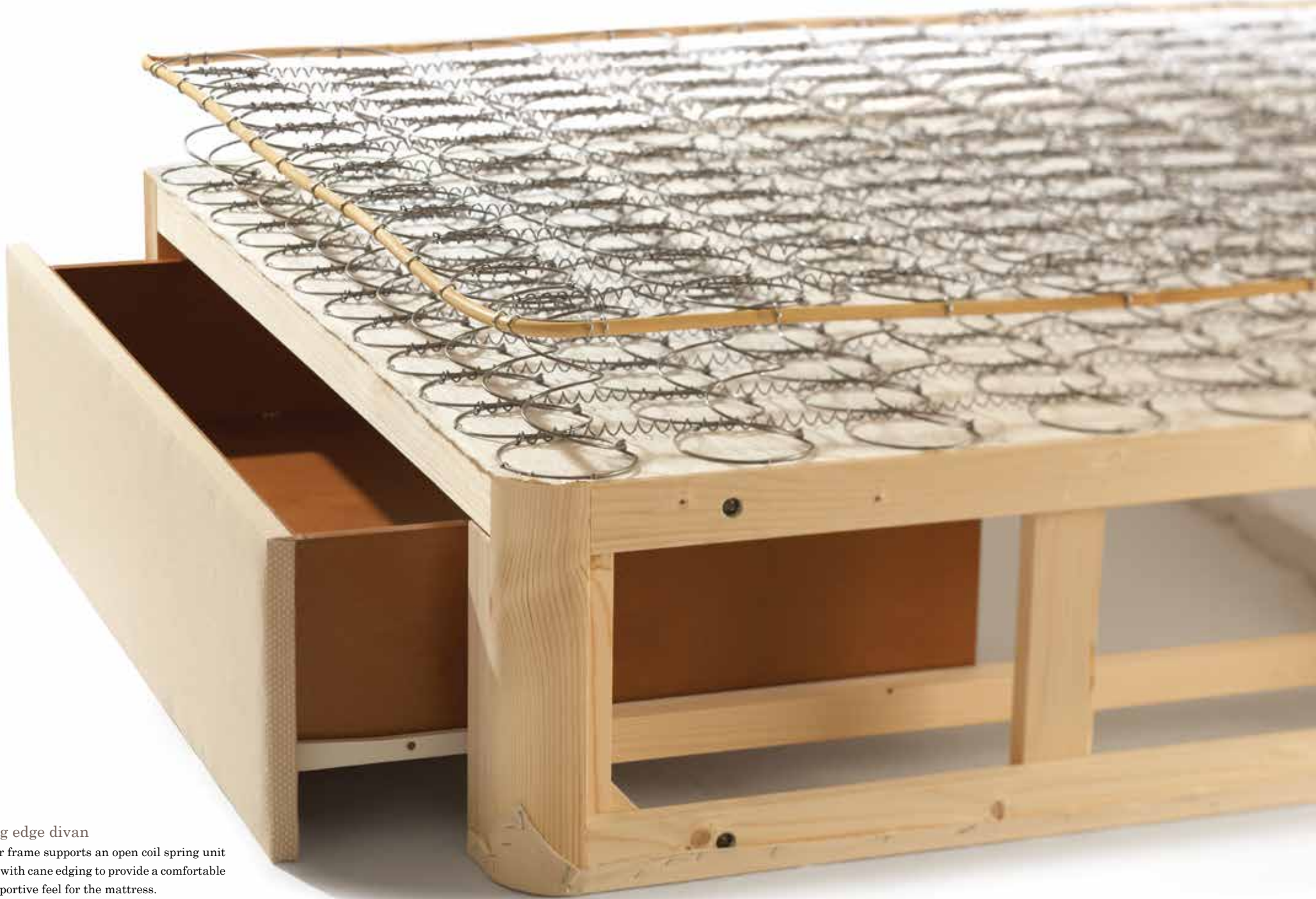
Hand-side-stitched pocketed divans also use individual heavy-duty open coil springs that are attached to support rails. The top of the springs are then webbed by hand, and a material layer is placed on top. The divan is then topped with a layer of pocketed springs to create a luxurious feel that works in harmony with your mattress.

Castors secured in hardwood corner blocks

Hand-lashed and hand-side-stitched pocketed divans both have large shepherd castors secured into hardwood corner blocks to support the weight of the mattress and divan, as well as for ease of moving the bed. Pocketed and sprung edge divans have high quality brushed silver castors also secured into hardwood blocks.



Hand-side-stitched pocketed divan



Sprung edge divan

A timber frame supports an open coil spring unit coupled with cane edging to provide a comfortable and supportive feel for the mattress.

Sprung edge divan frame

Relyon offers four different custom-made divan options to couple with the Royal Heritage mattresses. All Royal Heritage divans are solid timber sided for additional strength and durability.



Hand-side-stitched pocketed divan | firmest divan Height = 37.5cm

The ultimate in luxury and support, this dual sprung divan benefits from a layer of heavy-duty open coil springs topped with a layer of pocketed springs. We have further enhanced this divan with traditional hand tufting and two rows of hand side stitching.

Key features

- 1100* hand-nested pocketed springs
*in king size (150 x 200cm) divan
- 6" timber frame with rigid sides and all joints glued and screwed
- The pocketed springs are overlaid with a fibre layer for protection
- Individual heavy-duty open coil springs attached to the divan frame and webbed by hand
- Traditionally hand tufted with woollen tufts
- 2 rows of hand side stitching
- Large shepherd castors for ease of movement and to support the weight of both the mattress and divan
- Upholstered with your choice of Royal Heritage fabric
- Tailored finish with skirted sides



Hand-lashed divan | firm divan Height = 30cm

Individual heavy-duty open coil springs are each hand tied to the divan frame with waxed linen cord to provide outstanding support.

Key features

- Individual heavy-duty open coil springs are hand tied to the divan frame with waxed linen cord
- 6" timber frame with rigid sides and all joints glued and screwed
- Large shepherd castors for ease of movement and to support the weight of both the mattress and divan
- Upholstered with your choice of Royal Heritage fabric
- Tailored finish with skirted sides

Divan selection comfort choices...

The different divan specifications work with your chosen mattress to provide a firmer or softer feeling. See the divan firmness ratings to the right.

- Hand-side-stitched pocketed divan = firmest.
- Hand-lashed divan = firm.
- Pocketed divan = soft.
- Sprung edge divan = softest.



Pocketed divan | soft divan

Height = 43.5cm

Pocketed springs sit on top of a solid timber frame to create a luxurious feel that works in harmony with the mattress.

Key features

- 1150* hand-nested pocketed springs
*in king size (150 x 200cm) divan
- Timber frame with solid sides and all joints glued and screwed
- The pocketed springs are overlaid with a fibre layer for protection
- Drawer options available
- All drawers are assembled from solid hardwood components, using dovetail joints for strength, and feature smooth operation runners
- Brushed silver castors
- Upholstered with your choice of Royal Heritage fabric



Sprung edge divan | softest divan

Height = 41.5cm

A timber frame supports an open coil spring unit coupled with cane edging to provide comfort and support for the mattress.

Key features

- Timber frame with solid sides and all joints glued and screwed
- The open coil spring unit coupled with cane edging and overlaid with a fibre layer for protection
- Drawer options available
- All drawers are assembled from solid hardwood components, using dovetail joints for strength, and feature smooth operation runners
- Brushed silver castors
- Upholstered with your choice of Royal Heritage fabric



Adding valuable storage space...

Drawer option upgrades available on pocketed and sprung edge divans.

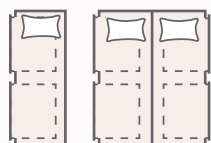
Drawer options

To allow you to add valuable storage to your bedroom Relyon offers three different drawer options on the pocketed and sprung edge divans. If you do not require a divan with drawers we also offer non storage options.

All drawers are assembled from solid hardwood components, using dovetail joints for strength, and feature smooth operation runners.

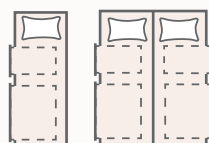
If you select a divan with drawers please consider if your room has enough space to be able to open them: divans with drawers will need at least 40cm surrounding space from the side of the bed to enable you to pull the drawers out.

4 Large drawer set



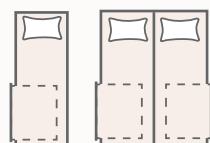
Single Double and above

2+2 Drawer set (2 Large and 2 small drawers)



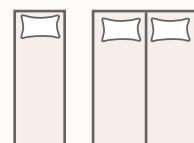
Single Double and above

2 Drawer set (2 Large drawers)



Single Double and above

Non storage



Single Double and above

Drawers for 90 x 190cm divans are available in left or right hand opening to suit the layout of your room. Please inform your retailer which you would like when ordering.



Divan drawer specifications	Width	Length	Height for internal storage	Storage weight limit
Large timber drawers with dovetail joints	78.3cm	52.5cm	15cm	25kg
Small timber drawers with dovetail joints	40.5cm	52.5cm	15cm	25kg







Headboards

To enhance the Royal Heritage Collection Relyon has developed a new collection of headboard designs. Have your divan and headboard upholstered in the same fabric from a choice of twenty four to create a stylish bed. Each of the beautifully hand-crafted headboard designs is available in different heights and widths to provide you with further individuality and to enable you to create a bespoke bed and a personalised look you'll love as the focal point of your bedroom.

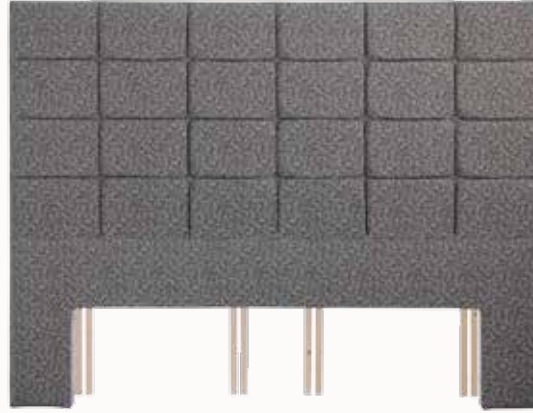
Headboards

A headboard is the all-important finishing touch that adds flair and interest to your bed and bedroom. All Royal Heritage headboard designs are available in each size to complete the divan set you have chosen.



Noble Statement height, extra wide 180cm Noble headboard in Royal 3534 shown in photograph above

Upholstered vertical panelling for a sleek and modern look. Available in all fabrics with a choice of heights and widths.



Consort Statement height, extra wide 180cm Consort headboard in Smoulder 3625 shown in photograph above

Upholstered square panels with button detailing. Available in all fabrics with a choice of heights and widths.



Stately Statement height, extra wide 150cm Stately headboard in Mist Plain 3629 with Mist Hexagonal 3627 centre panel shown in photograph above

Upholstered headboard with a large rectangular feature centre panel. Available in all fabrics with a choice of heights and widths.



Praise Statement height, extra wide 150cm Praise headboard in Pip 3620 shown in photograph above

Upholstered panelling with twin button detail. Available in all fabrics with a choice of heights and widths.



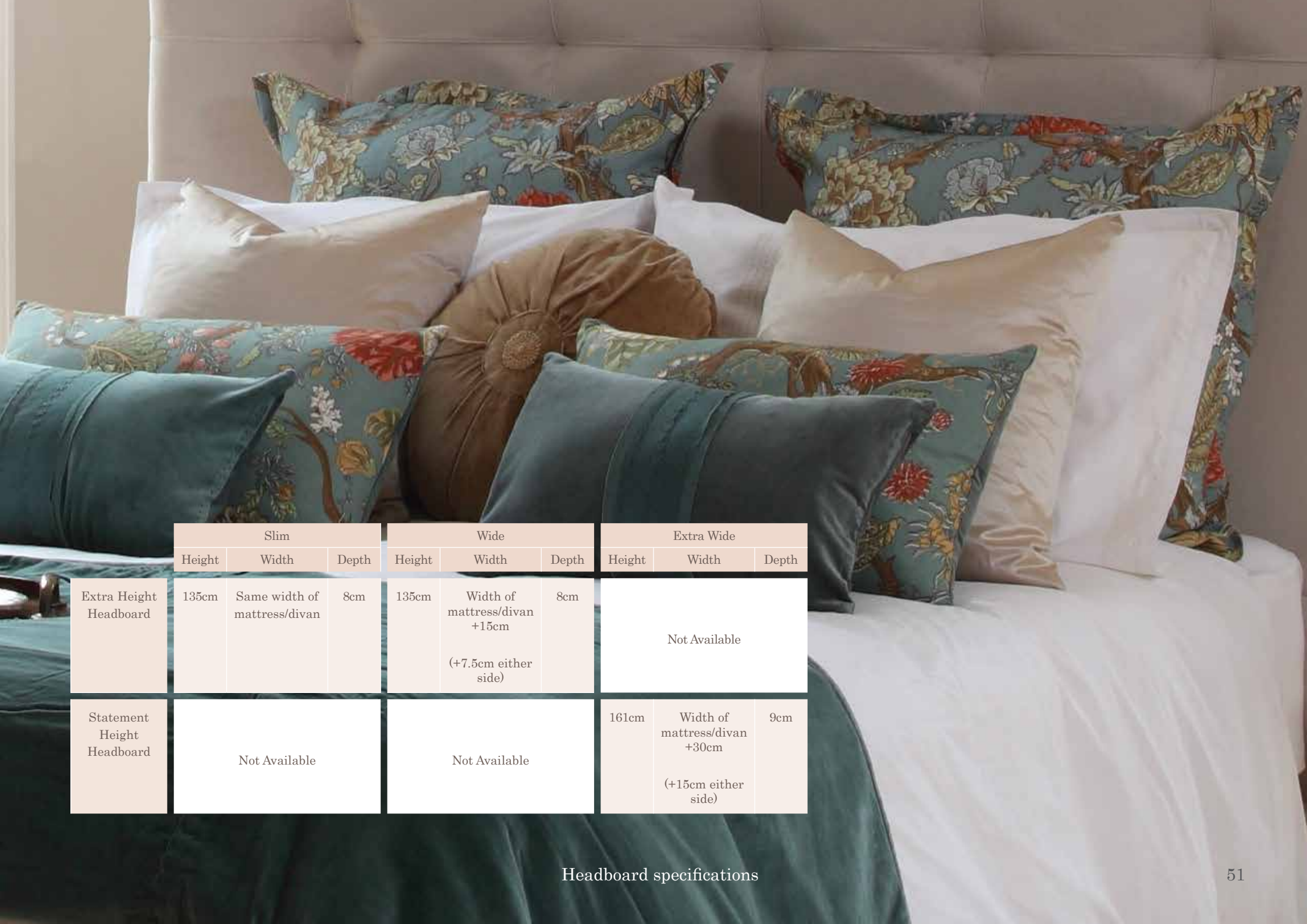
Honour Statement height, extra wide 150cm Honour headboard in Dove 3535 shown in photograph above

Upholstered headboard with seams and pulling detailing. Available in all fabrics with a choice of heights and widths.



Imperial Statement height, extra wide 150cm Imperial headboard in Clay 3622 shown in photograph above

Upholstered rectangular panels with button detailing. Available in all fabrics with a choice of heights and widths.



	Slim			Wide			Extra Wide		
	Height	Width	Depth	Height	Width	Depth	Height	Width	Depth
Extra Height Headboard	135cm	Same width of mattress/divan	8cm	135cm	Width of mattress/divan +15cm (+7.5cm either side)	8cm	Not Available		
Statement Height Headboard	Not Available			Not Available			161cm	Width of mattress/divan +30cm (+15cm either side)	9cm

Headboard specifications

Fabric options...

Arrows Flypast Patterns shown are not to scale



Straw
3619

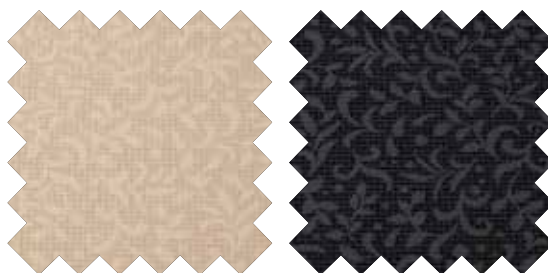
Pip
3620



Pebble
3621

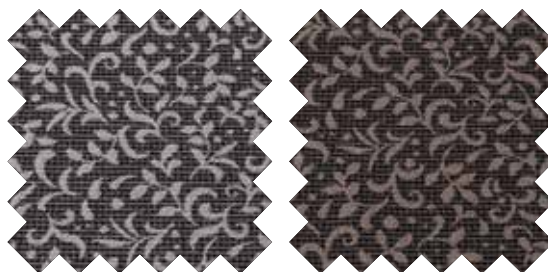
Clay
3622

Floral Patterns shown are not to scale



Vanilla
3623

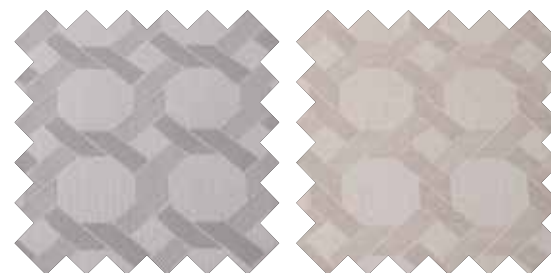
Carbon
3624



Smoulder
3625

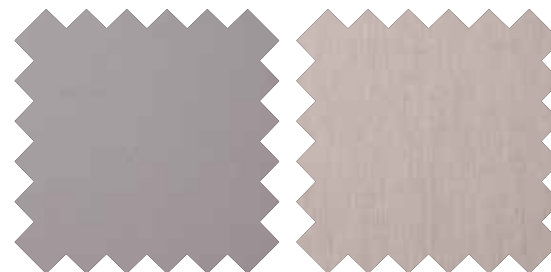
Chestnut
3626

Hexagonal Patterns shown are not to scale



Mist Hexagonal*
3627

Wheat Hexagonal*
3628



Mist Plain
3629

Wheat Plain
3630

A selection of 24 fabrics, from textured fabrics in weaves or luxurious velvets to patterned upholstery fabrics, all in a variety of colours. The Royal Heritage Collection's wide selection of upholstered divan and headboard fabrics offers a stylish solution for any style of bedroom. Whether you are looking for a classically designed divan set in a neutral colour or a coloured statement divan set, the Royal Heritage's fabric collection has it all.

The little details that make a big difference...

* On divans with skirts where either Mist Hexagonal or Wheat Hexagonal has been chosen the skirts will be upholstered with Mist Plain or Wheat Plain respectively (applies to hand-side-stitched pocketed and hand-lashed divans).

© Relyon® Ltd. 2013 The fabric colours in this brochure may vary slightly from the actual colours due to colour replication in the printing process.

Patterns, colours and textures

Weave Patterns shown are not to scale



Ivory
3522

Camel
3523

Duck Egg
3524



Lilac
3525

Charcoal
3526

Velvet Patterns shown are not to scale



Putty
3531

Taupe
3532

Slate
3533



Royal
3534

Dove
3535

Cosmic
3536



Lavender
3537

The little details that make a big difference...
These fabrics are high lustre, soft touch textiles. A characteristic of the cloth is pile movement which will create the appearance of colour variation depending on which direction you look at the pile. Relyon's craftsmen ensure when upholstering with these velvets that the pile is all facing the same direction so that the colour of your divan and headboard matches.

Summary specification tables

	Montacute	Cranleigh	Rosemount	Hampton	Clarence	Beaulieu
Mattress specification						
Spring counts						
Single mattress (90x190cm)	2706	1716	1480	1480	1258	1008
Double mattress (135x200cm)	4182	2652	2220	2220	1924	1512
King size mattress (150x200cm)	4773	3034	2496	2496	2340	1760
Super king mattress (180x200cm)	5547	3526	3198	3198	2964	2112
Key features						
Spring tension(s) available**	M,MF	M,MF	S,M,F	S,M,F	S,M,F	M,MF
Mattress border height (cm)	34.5*	33*	33*	30*	30*	26*
Rows of hand side stitching	5	5	4	3	3	3
Turnable	✓	✓	✓	✓	✓	✓
Triple layer of calico hand-nested and hand-centre-tied pocket springs	✓					
Double layer of calico hand-nested and hand-centre-tied pocket springs		✓	✓	✓	✓	
Single layer of calico hand-nested and hand-centre-tied pocket springs						✓
Number of comfort layers	21	18	16	16	14	11
Upholstery fillings						
Anti-allergenic layer	✓	✓	✓	✓	✓	✓
Lambswool layer	✓	✓	✓	✓	✓	✓
Rebound cotton layer	✓	✓	✓	✓	✓	✓
Hand-teased lambswool	✓	✓		✓	✓	✓
Hand-teased mohair	✓	✓	✓	✓	✓	
Hand-teased horse hair	✓	✓	✓	✓		
Cotton blend			✓	✓		
Cashmere and silk pad			✓			
Hand-teased merino wool	✓	✓				
Hand-teased cashmere	✓	✓				
Camel hair pad	✓					




* Including a 4cm maximum tolerance for loft of fillings for turnable mattresses.

** S = Soft tension. M = Medium tension. MF = Medium Firm tension. F = Firm tension.

Sizes Available	Height	90 x 190cm	135 x 190cm	150 x 200cm	180 x 200cm	75 x 190cm / 90 x 190cm	75 x 200cm / 90 x 200cm
Montacute	Mattress	34.5cm*	✓	✓	✓	✓	✓
	Hand-side-stitched pocketed divan	72cm**	✓	✓	✓	✓	✓
	Hand-lashed divan	64.5cm**	✓	✓	✓	✓	✓
	Pocketed divan	78cm**	✓	✓	✓	✓	✓
	Sprung edge divan	76cm**	✓	✓	✓	✓	✓
Cranleigh	Mattress	33cm*	✓	✓	✓	✓	✓
	Hand-side-stitched pocketed divan	70.5cm**	✓	✓	✓	✓	✓
	Hand-lashed divan	63cm**	✓	✓	✓	✓	✓
	Pocketed divan	76.5cm**	✓	✓	✓	✓	✓
	Sprung edge divan	74.5cm**	✓	✓	✓	✓	✓
Rosemount	Mattress	33cm*	✓	✓	✓	✓	✓
	Hand-side-stitched pocketed divan	70.5cm**	✓	✓	✓	✓	✓
	Hand-lashed divan	63cm**	✓	✓	✓	✓	✓
	Pocketed divan	76.5cm**	✓	✓	✓	✓	✓
	Sprung edge divan	74.5cm**	✓	✓	✓	✓	✓
Hampton	Mattress	30cm*	✓	✓	✓	✓	✓
	Hand-side-stitched pocketed divan	67.5cm**	✓	✓	✓	✓	✓
	Hand-lashed divan	60cm**	✓	✓	✓	✓	✓
	Pocketed divan	73.5cm**	✓	✓	✓	✓	✓
	Sprung edge divan	71.5cm**	✓	✓	✓	✓	✓
Clarence	Mattress	30cm*	✓	✓	✓	✓	✓
	Hand-side-stitched pocketed divan	67.5cm**	✓	✓	✓	✓	✓
	Hand-lashed divan	60cm**	✓	✓	✓	✓	✓
	Pocketed divan	73.5cm**	✓	✓	✓	✓	✓
	Sprung edge divan	71.5cm**	✓	✓	✓	✓	✓
Beaulieu	Mattress	26cm*	✓	✓	✓	✓	✓
	Hand-side-stitched pocketed divan	63.5cm**	✓	✓	✓	✓	✓
	Hand-lashed divan	56cm**	✓	✓	✓	✓	✓
	Pocketed divan	69.5cm**	✓	✓	✓	✓	✓
	Sprung edge divan	67.5cm**	✓	✓	✓	✓	✓

* Including a 4cm maximum tolerance for loft of fillings for turnable mattresses.

** The total height for both the mattress and divan including a 4cm maximum tolerance for loft of fillings for turnable mattresses.

Divan specifications	Divan height (cm)	Drawer options				Finishing details				
		Non storage <input type="checkbox"/>	4 Large drawers 	2 + 2 Drawers 	2 Drawers 	Large shepherd castors	Brushed silver castors	Skirted sides	2 Rows of hand side stitching	Hand tufted with woollen tufts
Hand-side-stitched pocketed divan	37.5	✓				✓		✓	✓	✓
Hand-lashed divan	30	✓				✓		✓		
Pocketed divan	43.5	✓	✓	✓	✓		✓			
Sprung edge divan	41.5	✓	✓	✓	✓		✓			



Caring for your bed...

Characteristics of sumptuous natural luxury mattresses

The Royal Heritage mattresses are filled with generous amounts of luxury fillings such as merino wool, lambswool, mohair, horse hair, traditional hair, cashmere, silk, and cotton that tend to 'settle' naturally. This settlement will be more noticeable in areas under the most body weight. This is quite normal and should not cause concern. Please remember to turn and rotate your mattress as advised to help the fillings settle evenly. A mattress care instruction leaflet will be provided with your mattress.



Ask about bespoke options...

As every bed is made to order, Relyon can make your bed to your special requirements...

- special sizes
- cut-out corners so your mattress will fit on your four-poster bed or vintage bedsteads
- cubed divan option for easier installation in difficult access bedrooms
- bolster pillows are also an available option

If you require further information on any of the above please ask an instore expert.

Acknowledgements...

Relyon would like to thank the following companies for their much appreciated help with the Royal Heritage brochure

Exeter Castle, Exeter

www.exetercastle.co.uk

Nest Interiors, Topsham

www.nestinteriors.com

Pinkstring, Topsham

Temptation Living, Sidmouth

www.temptationliving.co.uk

Amos Lighting, Exeter

www.amoslighting.co.uk

Naken Interiors, Gillingham

www.naken.co.uk

Ebury, London

www.eburyhomeandgarden.com

Pure Lana, Henley-on-Thames

www.purelana.com

Neptune, Swindon

www.neptune.com

True Grace, Warminster

www.truegrace.co.uk

Joshua's Dream, Ripon

www.joshuasdream.com

Bianca Lorenne, New Milton

www.biancalorenne.co.uk



www.relyon.co.uk

© Relyon® Ltd. Station Mills, Wellington, Somerset, TA21 8NN

A member of Steinhoff UK Holdings Ltd. Registered in England and Wales No. 3738136
Steinhoff UK Holdings Ltd, Fifth Floor, Festival House, Jessop Avenue, Cheltenham, Gloucestershire, GL50 3SH

© Relyon Ltd. not to be copied without permission. All information correct at time of going to print.
Relyon reserves the right to alter specifications without prior notice.

3rd Edition Royal Heritage Collection.
Printed January 2014

