

# Relyon®

The best beds in the world

THE  
MODERN COLLECTION



**Why choose Relyon:**

**Relyon is:**

One of the UK's leading bed manufacturers

a National Bed Federation Approved Member

a FISP certified factory

**Relyon has:**

Manufacturing Guild Mark status

5 years guarantee on all mattresses and divans

2 modern mattress collections

26 upholstery fabrics

5 different headboard designs

**EXPERIENCE THE DIFFERENCE**

Handmade by Somerset craftsmen since 1858

# Relyon®

The best beds in the world

## THE MODERN COLLECTION

Traditional skills combined with some of the world's finest materials to create an outstanding choice of handmade products. The Modern Collection comprises of nine pocket sprung mattresses upholstered with the unique feel of memory foam or latex for pressure relieving comfort. You are sure to find a bed to suit you and that will provide you with a peaceful night's sleep for years to come.

**Memory Collection:**

Memory Zoom 9000	6-7
Memory Zoom 7000	8-9
Memory Zoom 5000	10-11
Memory Embrace	12-13
Pocket Memory Classic	14-15

**Latex Collection:**

Latex Zoom 9000	16-17
Latex Zoom 7000	18-19
Latex Zoom 5000	20-21
Latex Simplicity	22-23

Divan Options	24-25
Divan Drawer Options	26
Padded Top Ottoman Divan	27
Headboard Collection	28-29
Fabric Collection	30-31
Summary Specification Tables	32-33



# The Modern Collection

The Modern Collection comprises of nine pocket sprung mattresses upholstered with the unique feel of memory foams or latex for pressure relieving comfort.

**The Modern Collection mattresses all boast five shared features.** All mattresses are:

- upholstered with either memory foam or latex,
  - anti-allergenic,
  - no turn for easy care.
- All mattresses have:
- individual supportive pocketed springs,
  - quick dry and breathable mattress fabrics.

**In addition to the five shared features, mattresses in the Modern Collection have unique features.** Make sure you look at the individual product specification to see whether the mattress has:

- a quilted or tufted top,
  - a sumptuous box top,
  - standard, tri or maxi zone pocket spring units,
  - quilted or side stitched borders.
- Finally look at and compare:
- the types of upholstery fillings in addition to the memory foam or latex.

## 1 Pressure relieving comfort

### Benefits of memory foam and latex



#### Pressure relieving properties

The support provided by memory foam or latex reduces stress on the body's pressure points and relieves aches and pains, preventing excessive tossing turning and provides a more restful sleep.



#### Improves blood circulation

Memory foam or latex allows the body to be supported correctly and this encourages natural blood circulation.



Pressure relieving foam is just the ticket for your journey to drift into a peaceful and full night's sleep.

## 2 Supportive pocketed springs

Individual springs encased in their own separate pockets move independently to provide the best postural support.

The individual pocket springs follow and support your body shape and weight. Even as you move around only the springs directly underneath your body compress and gently cradle you for the most comfortable sleep.

Higher spring counts offer more supportive comfort. In mattresses with a double layer of pocketed springs, the upper springs shape to the body contours while the lower layer absorbs changes in weight distribution for the ultimate in comfort and support.



### Look out for:

#### Maxi zone pocket springs units

Softer support zones to follow the contours of your shoulders and hips. With firmer support zones in between to provide perfect anatomical support and reduce pressure points for a more restful night's sleep.



#### Tri zone pocket springs units

Softer support zones at the head and foot of the mattress and firmer support in the middle to provide the correct level of support and spinal alignment.

For undisturbed sleep a pocket sprung mattress is a great choice if you or your partner tend to turn a lot during the night.

A common misconception is foam, memory foam and latex mattresses are hot. The reality is, **mattresses do not create heat, but foams are good insulators.**

Heat stress phenomenon is the irritation you feel when you become very warm and which quickly leads to a loss of concentration and loss of performance. Sleep quality also becomes poorer if the sleeper is too warm.

## 3 Anti-allergenic

All the mattresses in this collection are anti-allergenic as dust mites cannot survive in fibre layers or foam, allowing a healthy environment and peaceful sleep. There are two types of mattress constructions in the Modern Collection:

### 1. Pocketed springs layered with foam

and other upholstery fillings, topped with an anti-allergenic fibre layer and then covered with mattress fabric case.



Memory Embrace, Pocket Memory Classic, Latex Zoom 9000, Latex Zoom 7000 Latex Zoom 5000, Latex Simplicity.

### 2. Pocketed springs entirely encased in foam

(foam base, foam borders and foam top) with further upholstery layers on top, finished with the mattress fabric case.



Memory Zoom 9000, Memory Zoom 7000, Memory Zoom 5000.

### “ Did you know?

The common dust-mite is one of the major causes of Asthma, Sinusitis, Rhinitis and Eczema. The common dust-mite causes 70% of Asthma in the home. As you sleep, small skin particles are shed into the bedding and mattress. Dust-mites can eat and live on skin cells broken down by microscopic fungus.

## 4 Breathable and quick dry performance fabrics

To promote a comfortable sleeping temperature Relyon have carefully selected intelligent and soft stretch knit fabrics for the mattress panels.



**Coolplus®** is an advanced functional fibre that helps to regulate your body temperature so it does not exceed 37°C for a dry and comfortable night's sleep.

Micro-slits in the fibre increases the surface area and creates a capillary action enabling quick-drying, water wicking and air permeability properties to rapidly absorb and diffuse warm air and body moisture to keep the skin fresh. The benefits of Coolplus® do not wear off, as the functions come from the structure of the fibre itself. Coolplus® has 12% - 74% higher diffusion ability and 11% - 47% higher drying effect than that of cotton.



**Cool Comfort** is an effective fabric technology treatment that helps to balance your body temperature by providing enhanced evaporation for a more comfortable sleep.

### “ Did you know?

An adult loses on average a quarter of a litre of body moisture every night. This loss of moisture causes a clammy sensation and stimulates the production of perspiration which is not particularly good for a peaceful, comfortable night's sleep.



## 5 Easy care, no turn

Mattresses in the Modern Collection also have the extra bonus that they are easy care. Upholstered with foam and fibres with consistent densities that reduce settlement means they do not need to be flip over. Although, regular rotation is recommended to prolong the life of the mattress.

# Memory foam and latex compared

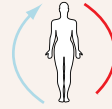
You may be asking how memory foam differs to latex and although both provide pressure relieving comfort they are quite different. This page provides the similarities and differences.

## Shared benefits of memory foam and latex:



### Pressure Relieving Properties

The support provided by memory foam or latex reduces stress on the body's pressure points and relieves aches and pains, preventing excessive tossing and turning and provides a more restful sleep.



### Improves Blood Circulation

Memory foam or latex allows the body to be supported correctly and this encourages natural blood circulation.

# Memory foam

## Man-made ingenious

Memory foam is polyurethane with additional chemicals to increase its viscosity and density. It is often referred to as "viscoelastic" polyurethane foam. It was first invented by NASA in the 1970s for space programs and used to upholster astronauts flight chairs to reduce pressure points, making astronauts more comfortable from the G-forces experienced during lift off. Since then it has been developed and has become a popular material of choice for medical and domestic mattresses and pillows due to its pressure relieving comfort.

## Temperature and weight responsive

Memory foam is temperature sensitive. Your memory foam mattress will feel firm at first, until it softens and moulds around the shape of your body in response to your body weight and heat.

## Body hugging comfort

Memory foam moulds to body contours to provide even distribution of body weight, pressure and responds and adapts to any bodily movements, reducing excessive tossing and turning for a more peaceful night's sleep.

## Steady recovery

It steadily recovers to its original shape once the pressure is removed.



# Latex

## Natural

Latex is a premium quality, naturally derived material made from latex liquid tapped from the trunks of rubber trees.

## Natural elasticity for immediate recovery

Latex has a distinctive resilient and durable feel. Its natural elasticity means it recovers its shape immediately when pressure is removed providing natural bounce.

## Natural bounce

It also has very good point elasticity which provides even pressure distribution for independent support.

## Anti-microbial

Latex is inherently dust-mite resistant and anti-microbial.



# Choosing the perfect mattress support

## Too soft

You will find it hard to slide your hand between the mattress and the small of your back.



## Correct support

The mattress conforms to your body contours whilst the spine remains straight. Your hand will slip snugly between the mattress and the small of your back.



## Too firm

Your hand will have lots of space between the mattress and the small of your back.



The National Bed Federation recommends that a bed is changed every seven years. People often keep them well beyond this and then have to replace them for all the wrong reasons: back pain, worn cover, tired fillings, exposed springs and lack of support.

## Take your time to choose...

Before you decide on a specific model it is important to try out a few, as each mattress within the Modern Collection has a different feel due to the varying spring counts, fillings and divan bases. Your mattress should give your entire body support and keep your spine as straight as possible. When choosing, everyone will have a different opinion of what is right for them; to help finalise that choice it is important to follow these simple guidelines:

- Allow yourself plenty of time when testing out the mattresses.
- Remove all outerwear and lie in your normal sleeping position as you would at home for at least five minutes.
- If you share a bed it is very important you both try it and that you choose a mattress that is supportive and comfortable for both of you.
- What feels comfortable for one person is not necessarily comfortable for another person.
- You need to make sure you have enough room to stretch out and freely turn over; size does matter, so always try to purchase the biggest bed that will fit in your room.

Purchasing the best bed possible is a great investment for your health and quality of life

# A better night's sleep makes for a better day awake



# memory zoom 9000

The choice for people who truly love a sumptuous mattress, topped with memory foam which supports your whole body in blissful comfort.



- 2500 Pocketed springs**  
in a 150x200cm mattress
- No turn mattress**
- Anti allergenic layer**
- Memory foam**  
70mm in the mattress
- Resilient foam**
- Coolplus®**

Deep luxurious quilted sleeping panel with a Coolplus® soft stretch knit fabric			
	<b>Top</b>	70mm	<b>Deep</b> memory foam
<b>Double layer of pocketed springs</b> <small>encased with foam</small>	<b>Top</b>	25mm	Foam
	<b>Borders</b>	100mm	<b>Deep</b> foam
	<b>Base</b>	50mm	Foam

Available sizes (W x L)	Mattress border	Weight <small>rounded to the next greater whole kg</small>	Spring count <small>for full mattress sizes</small>
90 x 190cm	33cm	27kg	1224
120 x 190cm		36kg	1567
135 x 190cm		41kg	1927
150 x 200cm		48kg	2500
180 x 200cm		57kg	2768

### Choose from three divan options:

Padded top divan, padded top divan on legs or padded top ottoman.



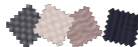
### Choose from five headboard options:

Harlequin, deep buttoned, contemporary, modern and classic.



### Choose from twenty six fabrics:

Textured fabrics to patterned upholstery fabrics; see pages 30-31 for full fabric options available.



MEMORY COLLECTION

In the bedroom shown:  
 a 150 x 200cm Memory Zoom 9000 mattress on a low height padded top 2 drawer divan.  
 The divan and contemporary slim extra height headboard are in Shale 2226.

# memory zoom 7000

This firm pocket sprung with pressure relieving memory foam mattress provides a wonderfully supportive sleep.



- 1400 Pocketed springs in a 150x200cm mattress
- No turn mattress
- Anti allergenic layer
- Memory foam 65mm in the mattress
- Resilient foam
- Coolplus®

Deep luxurious quilted sleeping panel with a Coolplus® soft stretch knit fabric			
	<b>Top</b>	65mm	Deep memory foam
Pocketed springs encased with foam	<b>Top</b>	20mm	Foam
	<b>Borders</b>	100mm	Deep foam
	<b>Base</b>	50mm	Foam

Available sizes (W x L)	Mattress border	Weight rounded to the next greater whole kg	Spring count for full mattress sizes
90 x 190cm	33cm	25kg	667
120 x 190cm		33kg	928
135 x 190cm		37kg	1073
150 x 200cm		43kg	1400
180 x 200cm		52kg	1568

### Choose from three divan options:

Padded top divan, padded top divan on legs or padded top ottoman.



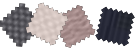
### Choose from five headboard options:

Harlequin, deep buttoned, contemporary, modern and classic.



### Choose from twenty six fabrics:

Textured fabrics to patterned upholstery fabrics; see pages 30-31 for full fabric options available.



MEMORY COLLECTION



In the bedroom shown:  
 a 150 x 200cm Memory Zoom 7000 mattress  
 on a padded top divan on legs.  
 The divan and deep buttoned slim extra  
 height headboard are in Truffle 3280.

# memory zoom 5000

Relax and sink slowly into this soft memory foam pocket sprung mattress which supports and surrounds you in supreme comfort.



<b>1200 Pocketed springs</b> in a 150x200cm mattress	<b>No turn mattress</b>	<b>Anti allergenic layer</b>	<b>Memory foam</b> 45mm in the mattress	<b>Resilient foam</b>	<b>Coolplus®</b>
---	-------------------------	------------------------------	--	-----------------------	------------------

Deep luxurious quilted sleeping panel with a Coolplus® soft stretch knit fabric			
	<b>Top</b>	45mm	Memory foam
<b>Pocketed springs</b> encased with foam	Foam encasing	<b>Top</b>	Resilient fibre support layer
		<b>Borders</b>	100mm <b>Deep foam</b>
		<b>Base</b>	25mm Foam

Available sizes (W x L)	Mattress border	Weight <small>rounded to the next greater whole kg</small>	Spring count <small>for full mattress sizes</small>
90 x 190cm	29cm	20kg	612
120 x 190cm		27kg	828
135 x 190cm		30kg	936
150 x 200cm		35kg	1200
180 x 200cm		42kg	1368

### Choose from three divan options:

Padded top divan, padded top divan on legs or padded top ottoman.



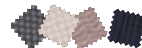
### Choose from five headboard options:

Harlequin, deep buttoned, contemporary, modern and classic.



### Choose from twenty six fabrics:

Textured fabrics to patterned upholstery fabrics; see pages 30-31 for full fabric options available.



MEMORY COLLECTION



In the bedroom shown:  
a 150 x 200cm Memory Zoom 5000 mattress on a padded top 2 drawer divan.  
The divan and modern slim headboard are in Biscuit 2224.

# memory embrace

A superb pocket sprung mattress with pressure relieving memory foam provides a rejuvenating night's sleep.



- 1200 Pocketed springs in a 150x200cm mattress
- Tri zone body support
- No turn mattress
- Boxtop
- Anti allergenic layer
- Memory foam 70mm in the mattress and boxtop
- Cotton rebound layer
- Hand tied borders
- 4 Rows of side stitching
- Hand tufted with wool tufts
- Coolplus®
- 5 Year guarantee

Available sizes (W x L)	Mattress border	Weight rounded to the next greater whole kg	Spring count
90 x 190cm	36cm	25kg	731
120 x 190cm		34kg	989
135 x 190cm		38kg	1118
150 x 200cm		44kg	1200
180 x 200cm		53kg	1575

### Choose from four divan options:

Sprung edge, padded top divan, padded top divan on legs or padded top ottoman.



### Choose from five headboard options:

Harlequin, deep buttoned, contemporary, modern and classic.



### Choose from twenty six fabrics:

Textured fabrics to patterned upholstery fabrics; see pages 30-31 for full fabric options available.



In the bedroom shown:  
a 150 x 200cm Memory Embrace mattress on a low height padded top 2 drawer divan.  
The divan and deep buttoned wide headboard are in Charcoal 3526.



# pocket memory classic

Exceptional comfort, value and quality all in one mattress. Awarded Which? Best Buy 2014 for the third consecutive year.



1500  
Pocketed  
springs  
in a 150x200cm  
mattress

No turn  
mattress

Anti  
allergenic  
layer

Memory  
foam  
50mm in the  
mattress

Resilient  
foam

3 Rows  
of side  
stitching

Hand tufted  
with felt  
tufts

Cool  
comfort

5 Year  
guarantee

Available sizes (W x L)	Mattress border	Weight rounded to the next greater whole kg	Spring count
90 x 190cm	26.5cm	23kg	832
120 x 190cm		31kg	1216
135 x 190cm		35kg	1312
150 x 200cm		41kg	1500
180 x 200cm		49kg	1836

### Choose from two divan options:

Padded top divan or padded top ottoman.



### Choose from five headboard options:

Harlequin, deep buttoned, contemporary, modern and classic.



### Choose from twenty six fabrics:

Textured fabrics to patterned upholstery fabrics; see page 30-31 for full fabric options available.



In the bedroom shown:  
a 150 x 200cm Pocket Memory Classic mattress on a padded top 2 drawer divan.  
The divan and harlequin wide extra height headboard are in Ash 3495.

# latexzoom 9000

Indulgent comfort of double layer of pocketed springs with the gentle cushioning of natural fillings and a deep layer of latex.



2200  
Pocketed  
springs  
in a 150x200cm  
mattress

Firm edge  
support

No turn  
mattress

Anti  
allergenic  
layer

Cashmere  
and silk

Latex  
48mm in the  
mattress

Hand tied  
borders

Hand tufted  
with wool  
tufts

Coolplus®

5 Year  
guarantee

Available sizes (W x L)	Mattress border	Weight rounded to the next greater whole kg	Spring count
90 x 190cm	32cm	34kg	1200
120 x 190cm		45kg	1680
135 x 190cm		50kg	1860
150 x 200cm		59kg	2200
180 x 200cm		70kg	2624

### Choose from three divan options:

Padded top divan, padded top divan on legs or padded top ottoman.



### Choose from five headboard options:

Harlequin, deep buttoned, contemporary, modern and classic.



### Choose from twenty six fabrics:

Textured fabrics to patterned upholstery fabrics; see pages 30-31 for full fabric options available.



NATIONAL BED FEDERATION  
**nbdf**

APPROVED  
MEMBER



In the bedroom shown:  
a 150 x 200cm Latex Zoom 9000 mattress on a sprung edge 2 drawer divan.  
The divan and harlequin slim statement height headboard are in Shale 2226.

# latexzoom7000

An exceptional pocket sprung mattress where you can truly feel the generous natural elasticity of the latex that provides pressure relieving comfort.



- 1500 Pocketed springs in a 150x200cm mattress
- Firm edge support
- No turn mattress
- Anti allergenic layer
- Latex 48mm in the mattress
- Resilient foam
- Hand tied borders
- Hand tufted with wool tufts
- Coolplus®
- 5 Year guarantee

Available sizes (W x L)	Mattress border	Weight rounded to the next greater whole kg	Spring count
90 x 190cm	28cm	27kg	832
120 x 190cm		36kg	1216
135 x 190cm		40kg	1312
150 x 200cm		47kg	1500
180 x 200cm		56kg	1836

Choose from three divan options:  
Padded top divan, padded top divan on legs or padded top ottoman.



Choose from five headboard options:  
Harlequin, deep buttoned, contemporary, modern and classic.



Choose from twenty six fabrics:  
Textured fabrics to patterned upholstery fabrics; see pages 30-31 for full fabric options available.



In the bedroom shown:  
a 150 x 200cm Latex Zoom 7000 mattress on a padded top divan on legs.  
The divan and deep buttoned slim extra height headboard are in Truffle 3280.

# latex zoom 5000

A beautiful handcrafted pocket sprung latex mattress for outstanding value and comfort for a peaceful night's sleep.



1000  
Pocketed  
springs  
in a 150x200cm  
mattress

Firm edge  
support

No turn  
mattress

Anti  
allergenic  
layer

Latex  
20mm in the  
mattress

Resilient  
foam

Hand tied  
borders

Hand tufted  
with wool  
tufts

Coolplus®

5 Year  
guarantee

Available sizes (W x L)	Mattress border	Weight <small>rounded to the next greater whole kg</small>	Spring count
90 x 190cm	26cm	22kg	620
120 x 190cm		29kg	837
135 x 190cm		32kg	930
150 x 200cm		37kg	1000
180 x 200cm		45kg	1287

### Choose from three divan options:

Padded top divan, padded top divan on legs or padded top ottoman.



### Choose from five headboard options:

Harlequin, deep buttoned, contemporary, modern and classic.



### Choose from twenty six fabrics:

Textured fabrics to patterned upholstery fabrics; see pages 30-31 for full fabric options available.



In the bedroom shown:  
a 150 x 200cm Latex Zoom 5000 mattress on  
a padded top ottoman divan. The divan and  
modern slim headboard are in Biscuit 2224.

NATIONAL BED FEDERATION  
**nbdf**

APPROVED  
MEMBER

LATEX COLLECTION

# latex simplicity

This latex boxtop provides extraordinary bounce and is a great choice if you prefer a sumptuous mattress.



- 1200 Pocketed springs in a 150x200cm mattress
- Maxi zone
- No turn mattress
- Anti allergenic layer
- Latex 20mm in the boxtop
- Super soft Reflex® foam
- Cotton rebound layer
- Hand tied borders
- 4 Rows of side stitching
- Hand tufted with wool tufts
- Coolplus®
- 5 Year guarantee

Available sizes (W x L)	Mattress border	Weight rounded to the next greater whole kg	Spring count
90 x 190cm	36cm	27kg	731
120 x 190cm		36kg	989
135 x 190cm		40kg	1118
150 x 200cm		47kg	1200
180 x 200cm		56kg	1575

### Choose from four divan options:

Sprung edge, padded top divan, padded top divan on legs or padded top ottoman.



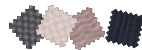
### Choose from five headboard options:

Harlequin, deep buttoned, contemporary, modern and classic.



### Choose from twenty six fabrics:

Textured fabrics to patterned upholstery fabrics; see pages 30-31 for full fabric options available.



In the bedroom shown:  
a 150 x 200cm Latex Simplicity mattress on a sprung edge divan.  
The divan and harlequin slim statement height headboard are in Shale 2226.

# Divan options

One of the secrets of a great night's sleep is the quality of support given to your mattress. Relyon offers two different types in a variety of options. The two main types are sprung edge and padded top. These divan types work with your chosen mattress to provide a softer or firmer and supportive feel.

## Sprung edge divan for a softer feel available on Memory Embrace and Latex Simplicity only

A timber frame supports an open coil spring unit coupled with cane edging to provide a flexible support for the mattress. Upholstered in your choice of fabric.



**Sprung edge divan standard height**

Divan height including leg height	Drawer options				Choice of upholstery fabrics
	Non storage	4 Large drawers	2 + 2 Drawers	2 Drawers	
41.5cm	✓	✓	✓	✓	✓

This divan is available on the below models with the following leg option:

	<b>Brushed silver castors</b> Memory Embrace Latex Simplicity
--	---



**Sprung edge divan low height**

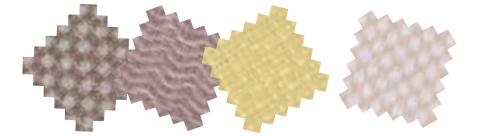
Divan height including leg height	Non storage	Choice of upholstery fabrics
	32cm	✓

This divan is available on the below models with the following leg option:

	<b>Brushed silver castors</b> Memory Embrace Latex Simplicity
--	---

Enhance your mattress feel and sleep experience further

Choose from 26 fabrics and have your divan and headboard upholstered in the same fabric to create a stylish bed.



See pages 30-31 for full fabric options available

## Padded top divan for a firmer and supportive feel

High quality timber frame to provide a firmer feel. Upholstered in your choice of fabric.



**Padded top divan standard height**

Divan height including leg height	Drawer options				Choice of upholstery fabrics
	Non storage	4 Large drawers	2 + 2 Drawers	2 Drawers	
41.5cm	✓	✓	✓	✓	✓

This divan is available on the below models with the following leg option:

	<b>Brushed silver castors</b> Memory Embrace all Latex Zoom models Latex Simplicity
--	--

	<b>Silver glides</b> all Memory Zoom models
--	--

	<b>Beige castors</b> Pocket Memory Classic
--	---



**Padded top divan low height**

Divan height including leg height	Drawer options				Choice of upholstery fabrics
	Non storage	4 Large drawers	2 + 2 Drawers	2 Drawers	
32cm	✓	✓	✓	✓	✓

This divan is available on the below models with the following leg option:

	<b>Brushed silver castors</b> Memory Embrace all Latex Zoom models Latex Simplicity
--	--

	<b>Silver glides</b> all Memory Zoom models
--	--

	<b>Beige castors</b> Pocket Memory Classic
--	---



**Padded top ottoman divan**

Divan height including leg height	Ottoman storage	Choice of upholstery fabrics
	41.5cm	✓

This divan is available on the below models with the following leg option:

	<b>Brushed silver castors</b> as standard on all models
--	--

Ingenious storage solution option, more storage space than padded top divan with drawers.



**Padded top divan on legs**

Divan height including leg height	Non storage	Choice of upholstery fabrics
	31cm	✓

This divan is available on the below models with the following leg option:

	<b>Beech cone legs</b> as standard on all models
--	---

Provides a lower overall height. The solid beech cone legs lift the low profile box base up from the floor for a stylish look.



## Divan drawer options

To allow you to add valuable storage to your bedroom, Relyon offers three different drawer options on the sprung edge and padded top divans. If you do not require a divan with drawers we also offer non storage options.

4 Large drawer set	2+2 Drawer set (2 Large and 2 small drawers)	2 Drawer set (2 Large drawers)	Non storage set
Single Double and above	Single Double and above	Single Double and above	Single Double and above

All divans have high quality timber frames with strong wooden corner blocks for the feet to fix into as well as smooth operation runners for ease of opening and closing the drawer.

If you select a divan with drawers please consider if your room has enough space to be able to open them: divans with drawers will need at least 40cm surrounding space from the side of the bed to enable you to pull the drawers out.



Drawers for single divans (90 x 190cm) are available in left or right hand opening to suit the layout of your room.

Please inform your retailer which you would like when ordering.

	Width	Length	Height for internal storage	Storage weight limit
Large spacious drawers	78.3cm	52.5cm	15cm	15kg
Small spacious drawers	40.5cm			

## Padded top ottoman divan options

The ottoman divan is an ideal solution if space is limited in your bedroom as it provides generous storage space for linen, blankets, towels or clothes. The base lifts easily with the help of gas rams and hinges.

Single 90 x 190cm	Double and king size 135 x 190cm and 150 x 200cm	Super king 180 x 200cm

- Choice of left or right hand opening upon assembly.
- Two gas rams and hinges.
- One storage compartment.
- Non-slip mat to keep mattress in place when ottoman lid is up to access stored items.
- Silver castors.

- Choice of left or right hand opening upon assembly.
- Four gas rams and hinges.
- Two storage compartments.
- Non-slip mat to keep mattress in place when ottoman lid is up to access stored items.
- Silver castors.

- Foot end opening.
- Four gas rams and hinges.
- Two storage compartments.
- Silver castors.



Height including castors	Height for internal storage	Maximum height with the lid open including mattress without bedding	Storage weight limit
41.5cm	22cm	151cm	25kg per compartment distributed evenly across the compartment area

A king size (150 x 200cm) ottoman divan has **6 times more space than a 2 drawer divan**



Hand cut outs make it easier to open your ottoman and provide a cleaner look than handles. Rest assured the gas rams and hinges do the majority of lifting for you.

## Maximise your storage space

# Headboard options



## Harlequin

An elegant upholstered headboard featuring four rows of deep buttons and pleating arranged in a sophisticated diamond pattern.

Available in all fabrics with a choice of heights and widths:

- Statement height in extra wide
- Extra height slim and wide



## Deep buttoned

A striking design finished in a square panel effect with row of buttons.

Available in all fabrics with a choice of heights and widths:

- Extra height slim and wide
- Standard height slim and wide
- Bed fixing



## Contemporary

Stylish and bold design finished in a rectangular panel effect divided by a two button detail.

Available in all fabrics with a choice of heights and widths:

- Extra height slim and wide
- Standard height slim and wide
- Bed fixing



## Modern

A timeless and effortless upholstered headboard design.

Available in all fabrics with a choice of heights and widths:

- Extra height slim and wide
- Standard height slim and wide
- Bed fixing



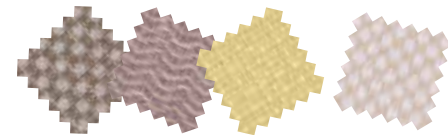
## Classic

An elegant arched design.

Available in all fabrics with a choice of heights and widths:

- Extra height slim and wide
- Standard height slim and wide
- Bed fixing

Choose from 26 fabrics and have your divan and headboard upholstered in the same fabric to create a stylish bed.



## Any style, any fabric...

	Slim Same width of mattress/divan					Wide Width of mattress/divan +15cm (+7.5cm either side)					Extra wide Width of mattress/divan +30cm (+15cm either side)				
	90cm	120cm	135cm	150cm	180cm	90cm	120cm	135cm	150cm	180cm	90cm	120cm	135cm	150cm	180cm
<b>Bed fixing headboard</b> Height:70cm Depth:7.62cm	✓ 11kg	✓ 15kg	✓ 17kg	✓ 19kg	✓ 21kg	Not available					Not available				
<b>Standard height headboard</b> Height:124cm Depth:7.62cm	✓ 13kg	✓ 17kg	✓ 19kg	✓ 21kg	✓ 25kg	✓ 15kg	✓ 19kg	✓ 21kg	✓ 23kg	✓ 27kg	Not available				
<b>Extra height headboard</b> Height:135cm Depth:7.62cm	✓ 15kg	✓ 20kg	✓ 23kg	✓ 25kg	✓ 30kg	✓ 17kg	✓ 21kg	✓ 24kg	✓ 26kg	✓ 31kg	Not available				
<b>Statement height headboard</b> Height:161cm Depth:9cm	Not available					Not available					✓ 19kg	✓ 23kg	✓ 26kg	✓ 28kg	✓ 33kg



**Bed fixing**

A standard headboard design with the upholstered headboard panel on long wooden struts. The wooden struts are the most common form of fitting a headboard to your bed allowing you to position the upholstered panel in line and above the mattress.



**Slim**

A floor standing headboard design that neatly aligns with the width of your mattress and divan. Integrated wooden struts included to allow you to fit the headboard to your divan base.



**Wide**

A floor standing headboard design that is stylishly wider than the width of your mattress and divan adding 7.5cm either side of you mattress and divan. Integrated wooden struts included to allow you to fit the headboard to your divan base.

### Extra height

Extra height headboard creates a centre piece for large bedrooms. Standing at an impressive 135cm the extra height headboard allows the details of the headboard to be showcased even when the bed is fully dressed with bed linen, pillows and cushions.



**Extra wide**

A floor standing headboard design that is stylishly wider than the width of your mattress and divan adding 15cm either side of you mattress and divan. Integrated wooden struts included to allow you to fit the headboard to your divan base.

### Statement height

Statement height is the tallest headboard on offer which creates a showpiece focal feature for extra spacious bedrooms that are large enough to house it. Standing at a commanding 161cm it enables the headboard to still be on show even when your bed is fully dressed with bed linen, pillows and cushions.



# Fabric options

A selection of twenty six fabrics. Choose from textured fabrics to patterned upholstery fabrics. Whether you are looking for a classical designed divan set in a neutral colour or a coloured statement divan set you can find a fabric to suit your style.

## Range A

<b>Squares</b>								
	Champagne 3278	Chocolate 3308	Coco 2136	Noir 3282	Platinum 3297	Truffle 3280		
	<b>Stripes</b>							
		Blueberry 3286	Café 3284	Damson 3288	Pewter 3289			
		<b>Herringbone</b>						
			Biscuit 2224	Heather 2225	Shale 2226			

## Range B

Range B upholstery fabrics available at extra cost: please ask your Relyon retailer for full details.

<b>Weave</b>						
	Ash 3495	Granite 3504	Plum 3514	Quince 3517	Sky 3496	
	<b>Plain</b>					
		Camel 3523	Charcoal 3526	Duck Egg 3524	Ivory 3522	Lilac 3525
		<b>Floral</b>				
Bear* 3121			Fossil* 3120	Mushroom* 3119		

\*Patterns shown are not to scale

© Relyon® Ltd. 2014 The fabric colours in this brochure may vary slightly from the actual colours due to colour replication in the printing process.

## Mattress specifications

		Memory Zoom 9000	Memory Zoom 7000	Memory Zoom 5000	Memory Embrace	Pocket Memory Classic	Latex Zoom 9000	Latex Zoom 7000	Latex Zoom 5000	Latex Simplicity	
		Memory Collection					Latex Collection				
Springs	Double layer of pocketed springs	✓					✓				
	Single layer of pocketed springs		✓	✓	Tri Zone	✓		✓		Maxi Zone	
	Foam encapsulated	✓	✓	✓							
	Firm perimeter support						✓	✓	✓		
Key Features	Spring tension(s) available	One tension					One tension				
	Mattress border height	33cm	33cm	29cm	36cm	26.5cm	32cm	28cm	26cm	36cm	
	Rows of side stitching				4	3				4	
	Hand tied borders				✓		✓	✓	✓	✓	
	Mattress care turn instructions	Easy care no turn*					Easy care no turn*				
	Mattress finish	Quilted mattress panel			Woollen tufts	Felt tufts	Woollen tufts				
	Boxtop				✓**					✓**	
	Coolplus® mattress panel fabric	✓	✓	✓	✓		✓	✓	✓	✓	
	Cool comfort mattress panel fabric					✓				✓	
Upholstery fillings	Anti allergenic layer	✓	✓	✓	✓	✓	✓	✓	✓	✓	
	Memory foam	70mm	65mm	45mm	70mm	50mm					
	Resilient foam	✓	✓	✓		✓		✓	✓		
	Cotton rebound layer				✓					✓	
	Latex						48mm	48mm	20mm	20mm	
	Cashmere and silk						✓				
Super soft Reflex® foam									✓		

\* Including a 2cm maximum tolerance for loft of fillings for no turn mattresses in a new condition prior to use.  
 \*\* Including a 6cm maximum tolerance for loft of fillings for boxtop mattresses in a new condition prior to use.

## Divan specifications

	Divan height (cm) this includes feet height	Drawer options					Finishing details			
		Non storage	4 Large drawers	2 + 2 Drawers	2 Drawers	Ottoman storage	Brushed silver castors	Silver glides	Beige castors	Beech cone legs
Sprung edge divan standard height	41.5cm	✓	✓	✓	✓		✓			
Sprung edge divan low height	32cm	✓					✓			
Padded top divan standard height	41.5cm	✓	✓	✓	✓		✓	✓	✓	
Padded top divan low height	32cm	✓	✓	✓	✓		✓	✓	✓	
Padded top ottoman divan	41.5cm					✓	✓			
Padded top divan on legs	31cm	✓								✓

## Mattress information

	Mattress border height		Sizes available				
			90 x 190cm	120 x 190cm	135 x 190cm	150 x 200cm	180 x 200cm
Memory Zoom 9000	33cm*	Spring counts for full mattress sizes	1224	1567	1927	2500	2768
		Weights	27kg	36kg	41kg	48kg	57kg
Memory Zoom 7000	33cm*	Spring counts for full mattress sizes	667	928	1073	1400	1568
		Weights	25kg	33kg	37kg	43kg	52kg
Memory Zoom 5000	29cm*	Spring counts for full mattress sizes	612	828	936	1200	1368
		Weights	20kg	27kg	30kg	35kg	42kg
Memory Embrace	36cm**	Spring counts	731	989	1118	1200	1575
		Weights	25kg	34kg	38kg	44kg	53kg
Pocket Memory Classic	26.5cm*	Spring counts	832	1216	1312	1500	1836
		Weights	23kg	31kg	35kg	41kg	49kg
Latex Zoom 9000	32cm*	Spring counts	1200	1680	1860	2200	2624
		Weights	34kg	45kg	50kg	59kg	70kg
Latex Zoom 7000	28cm*	Spring counts	832	1216	1312	1500	1836
		Weights	27kg	36kg	40kg	47kg	56kg
Latex Zoom 5000	26cm*	Spring counts	620	837	930	1000	1287
		Weights	22kg	29kg	32kg	37kg	45kg
Latex Simplicity	36cm**	Spring counts	731	989	1118	1200	1575
		Weights	27kg	36kg	40kg	47kg	56kg

## Divan options

	Mattress					
						All Memory Zoom models
All Latex Zoom models	Padded top divan (standard and low height)	✓	n/a	✓	✓	✓
	Padded top ottoman divan	✓	n/a	✓	✓	✓
	Padded top divan on legs	✓	n/a	✓	✓	✓
Memory Embrace	Mattress	✓	✓	✓	✓	✓
Latex Simplicity	Sprung edge divan (standard and low height)	✓	✓	✓	✓	✓
	Padded top divan (standard and low height)	✓	✓	✓	✓	✓
	Padded top ottoman divan	✓	n/a	✓	✓	✓
	Padded top divan on legs	✓	✓	✓	✓	✓
Pocket Memory Classic	Mattress	✓	✓	✓	✓	✓
	Padded top divan (standard and low height)	✓	✓	✓	✓	✓
	Padded top ottoman divan	✓	n/a	✓	✓	✓

\* Including a 2cm maximum tolerance for loft of fillings for no turn mattresses in a new condition prior to use.  
 \*\* Including a 6cm maximum tolerance for loft of fillings for boxtop mattresses in a new condition prior to use.  
 Spring counts are based on a full mattress sizes.  
 Weights rounded to the next greater whole kg.



**Relyon**<sup>®</sup>

The best beds in the world

[www.relyon.co.uk](http://www.relyon.co.uk)



Made in the UK



**Manufacturing  
Guild Mark**



© Relyon<sup>®</sup> Ltd. Station Mills, Wellington, Somerset, TA21 8NN  
Registered in England and Wales No. 00470381



A member of Steinhoff UK Holdings Ltd.  
Registered in England and Wales No. 3738136  
Steinhoff UK Holdings Ltd,  
Fifth Floor, Festival House,  
Jessop Avenue, Cheltenham,  
Gloucestershire, GL50 3SH

© Relyon<sup>®</sup> Ltd. 2014 not to be copied without permission.  
All information correct at time of going to print. Relyon reserves the right to alter specifications without prior notice.  
The fabric colours in this brochure may vary slightly from the actual colours due to colour replication in the printing process.  
1<sup>st</sup> Edition Modern Collection. Printed December 2014.